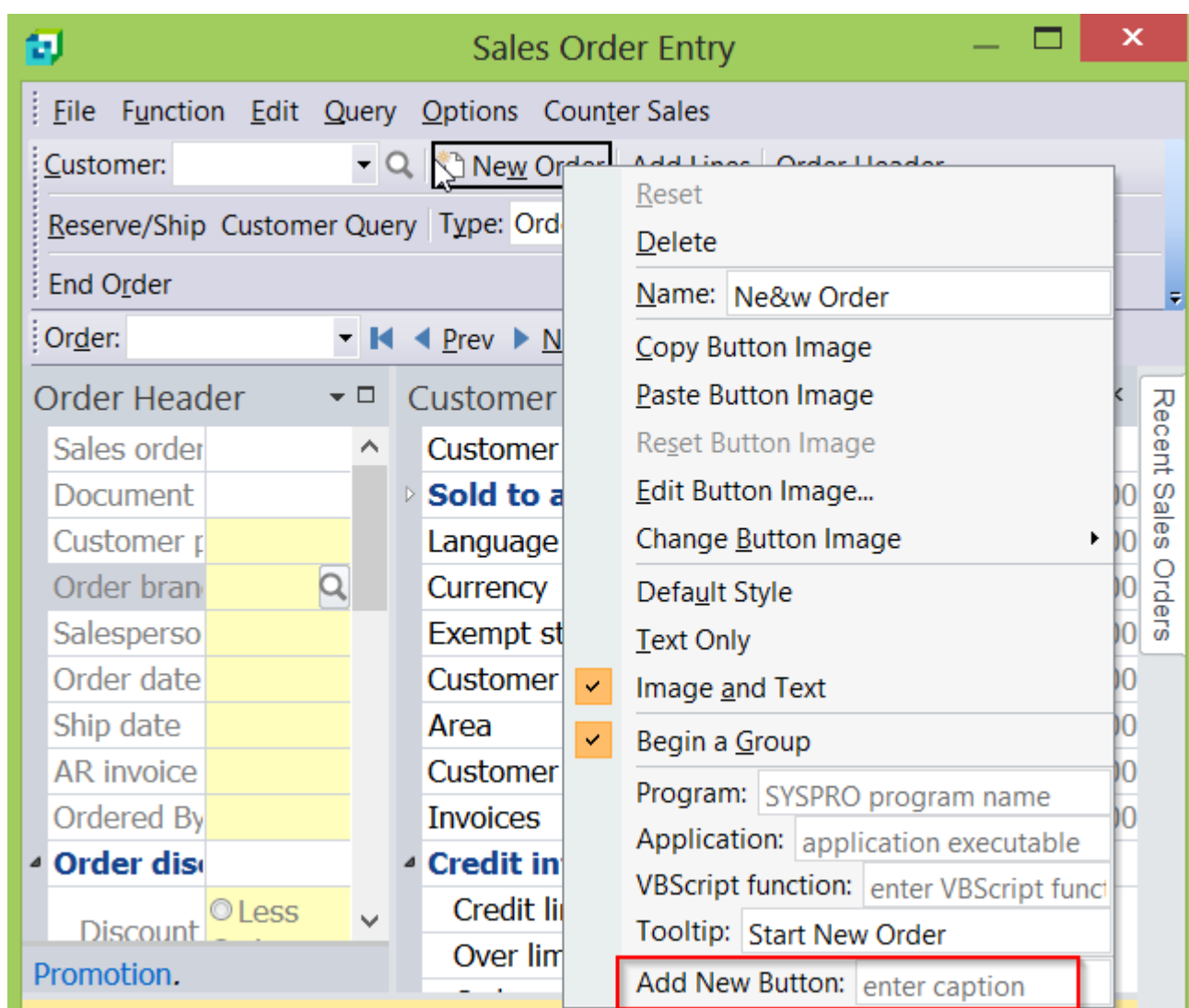


Adding a Program or Application to Toolbar

In SYSPRO 6.1 if you need to customize the toolbar button to perform an activity, you have to copy from an existing button and then change the function from the existing one to the new function you need to perform.

In SYSPRO 7 a new function 'Add New Button' has been added against the toolbar customization. When a new button is added, you can then use it to call any one of the following:

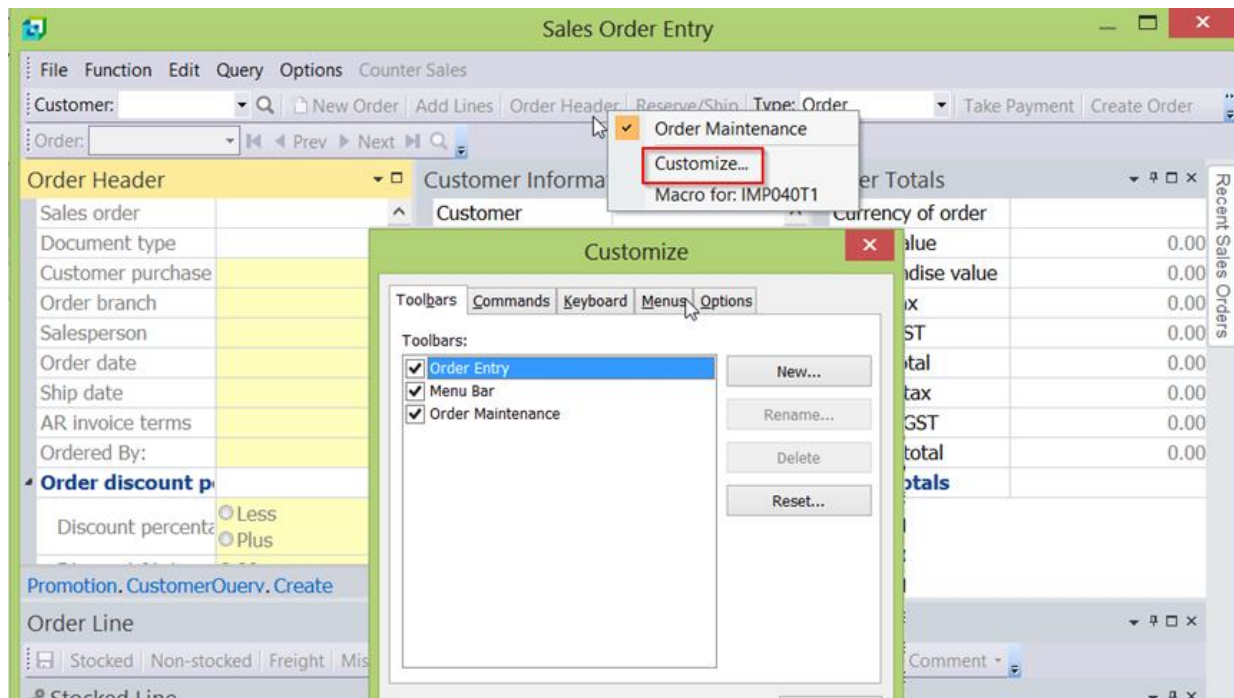
- A SYSPRO Program
- An application executable
- A VBScript function



Let's see how you can add AR Customer Query program (ARSPEN) and Calculator application (Calc.exe) on the toolbar using 'Add new button'.

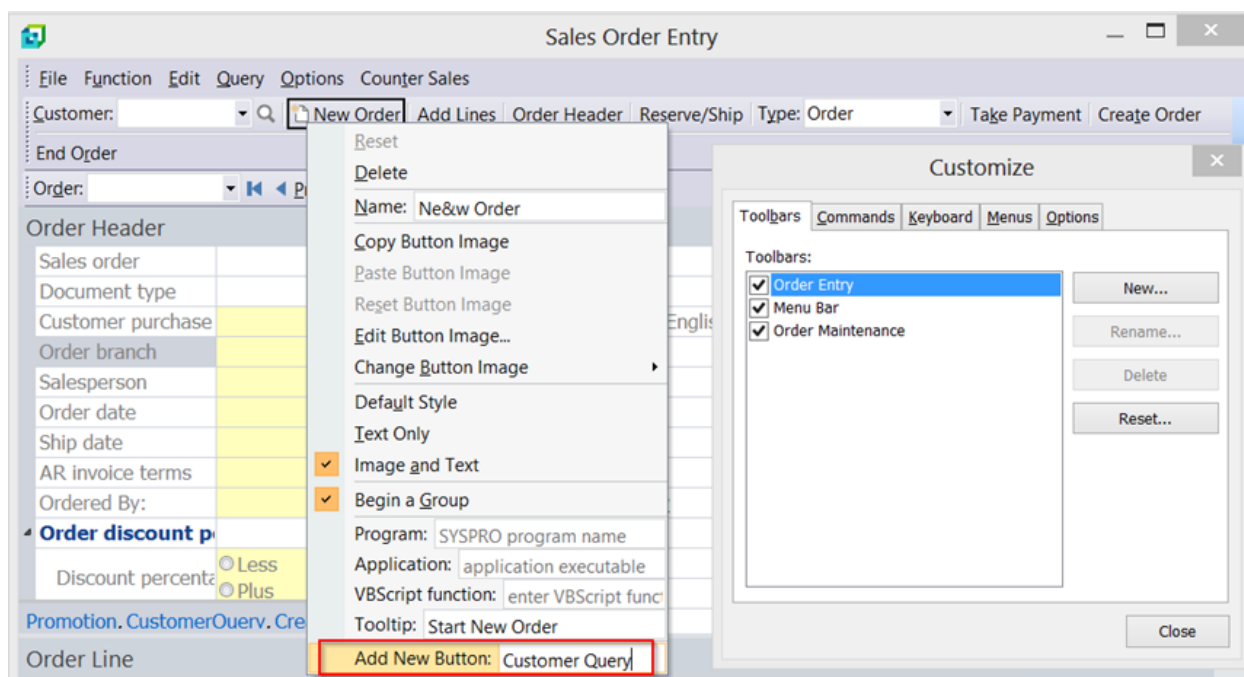
Adding ARSPEN to Sales Order Entry toolbar

To add a new toolbar button, right-click anywhere on the toolbar and select 'Customize'. The Customize window is displayed.

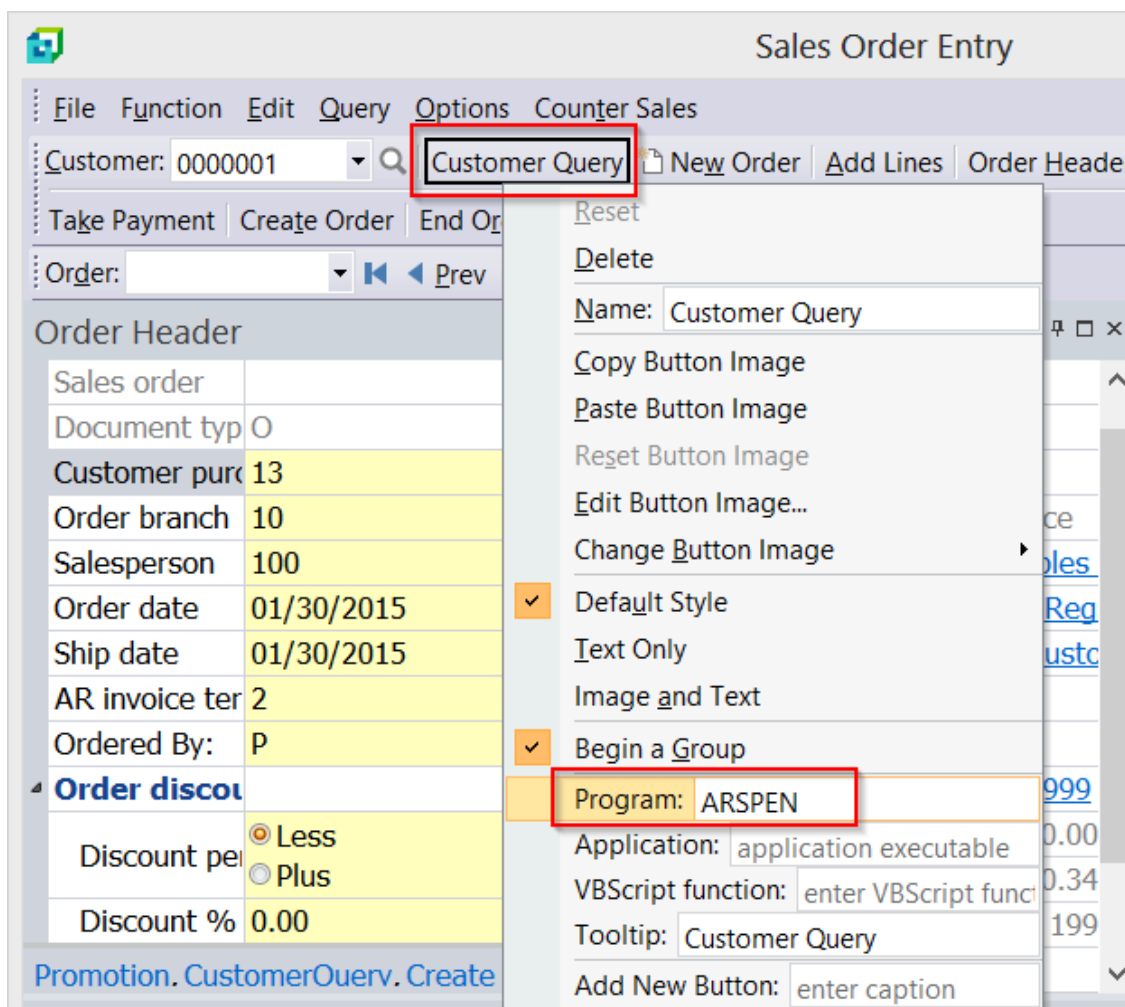


Keep the Customize window open, right-click anywhere on the toolbar again. Enter a name for the button in 'Add New Button' box. In this example, we name it as 'Customer Query'.

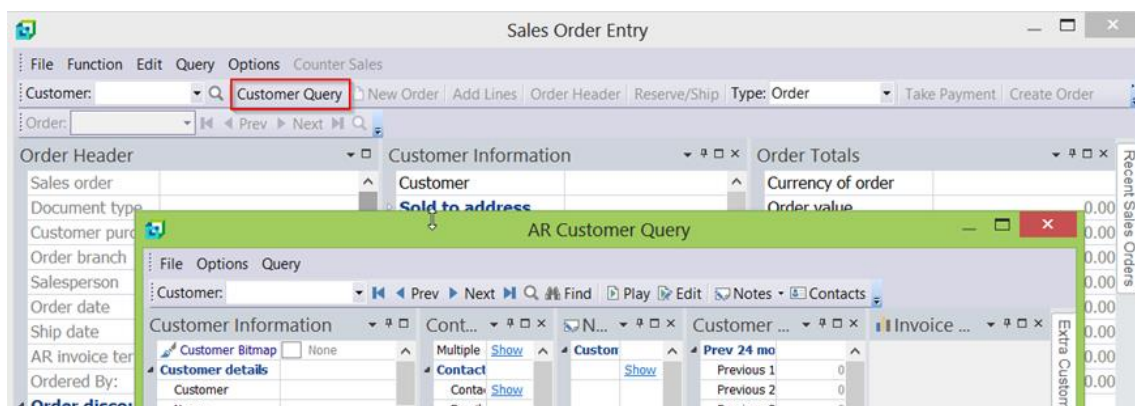
Note: You need press Enter key after each entry for the change to take place and then right-click on the icon to continue.



The 'Customer Query' button is now created on the toolbar. To link the button to the program, right click on the button and enter program name 'ARSPEN'.



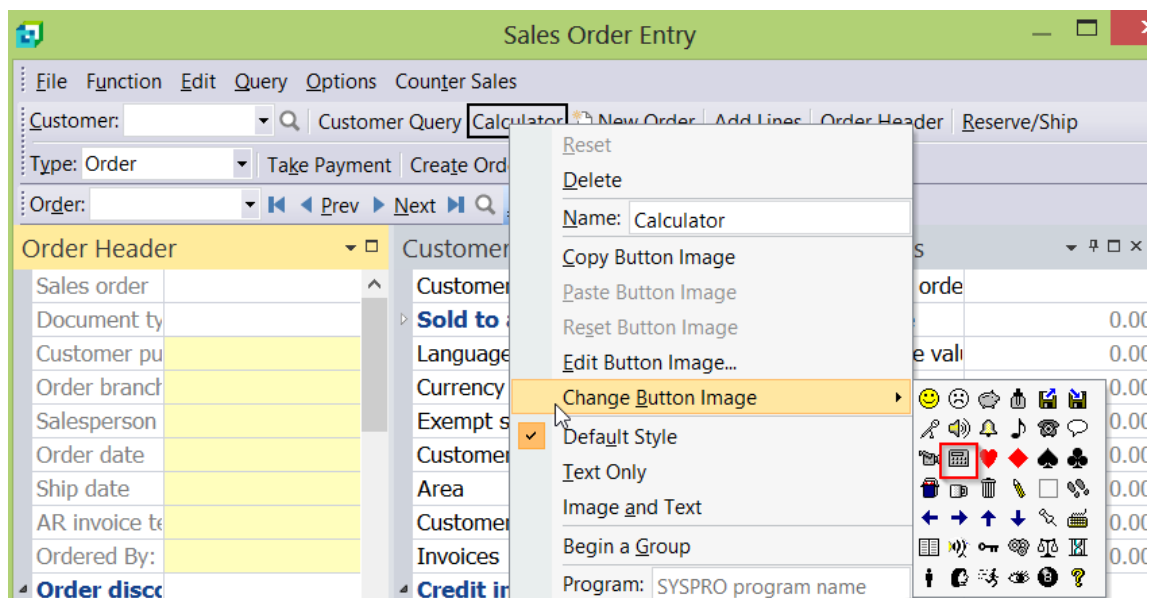
Click on 'Customer Query' button, it now launches AR Customer Query program.



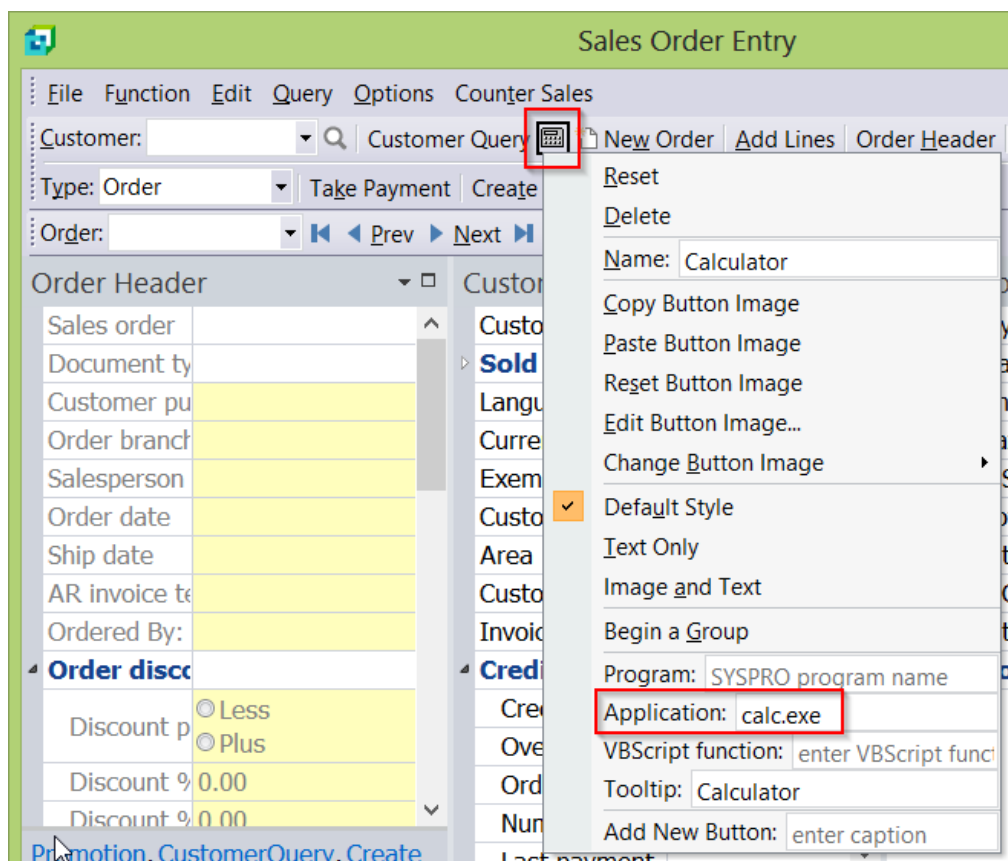
Adding Calculator application to Sales Order Entry toolbar

Create another new button to add the Calculator application.

To change the button image, right click on the button, select 'Change Button Image' > Select the calculator image



The button image is now changed. Right click on the calculator again, enter the application name 'calc.exe'



Now you can launch the calculator from SYSPRO toolbar.



Sales Order Entry

File Function Edit Query Options Counter Sales

Customer: [] Customer Query [] New Order Add Lines Order Header Reserve/S

Order: [] Prev Next

Order Header		Order Totals	
Sales order		Currency of orde	
Document ty		Order value	
Customer pu		Merchandise val	
Order branch		Order tax	
Salesperson		Order GST	
Order date		Order total	
Ship date		Invoice tax	
AR invoice te		Invoice GST	
Ordered By:		Invoice total	
Order disc		Hash totals	
Discount p	<input type="radio"/> Less <input checked="" type="radio"/> Plus		
Discount %	0.00		
Discount %	0.00		

Promotion. CustomerQuerv. Create

Calculator

View Edit Help

0

MC MR MS M+ M-

← CE C ± √

7 8 9 / %

4 5 6 * 1/x

1 2 3 - =

0 . +